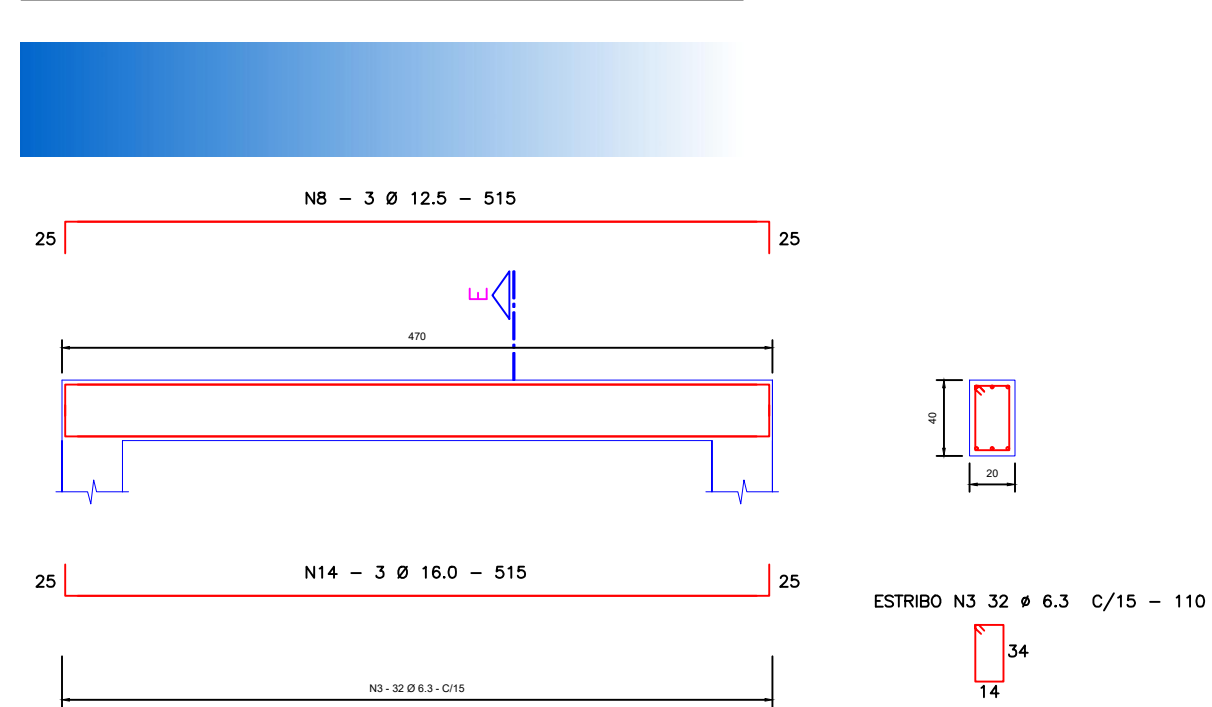
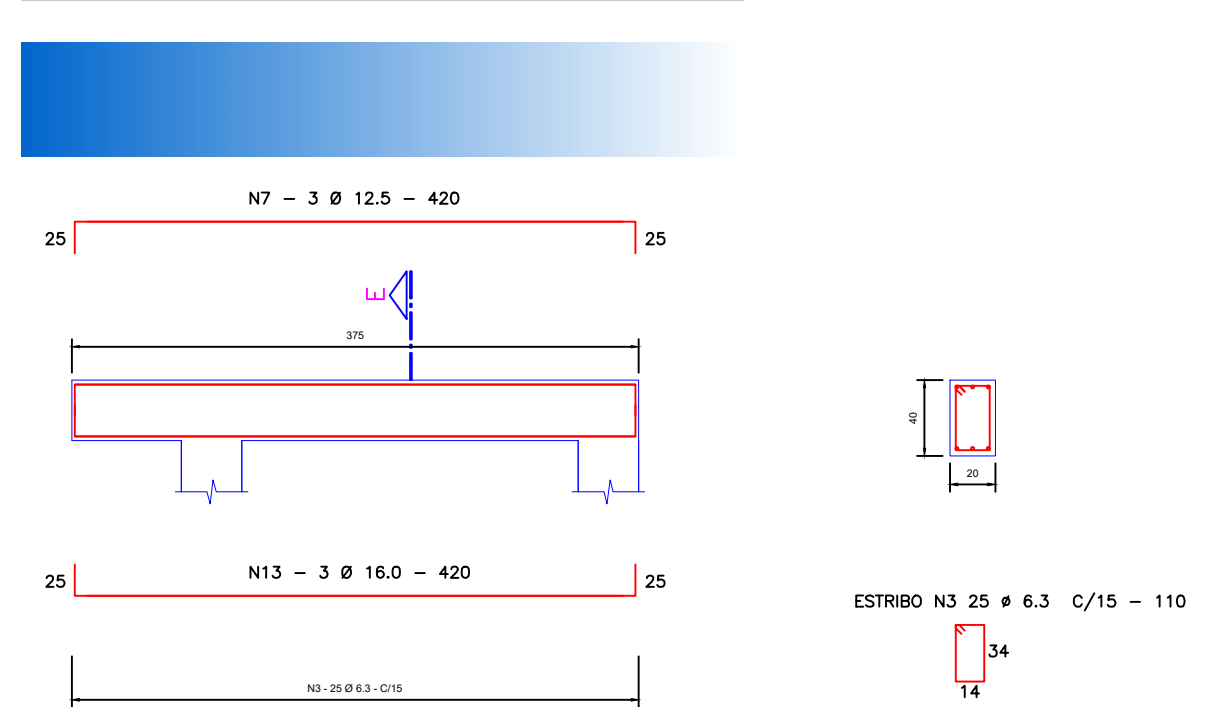


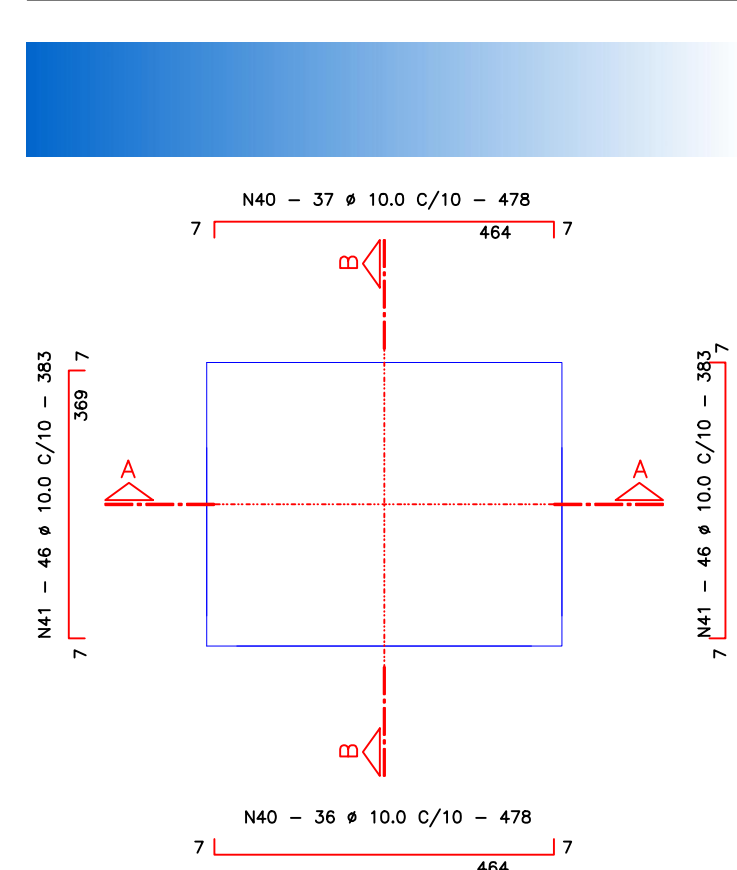
ARMAÇÃO DAS VIGAS - V3-V4-V7-V8



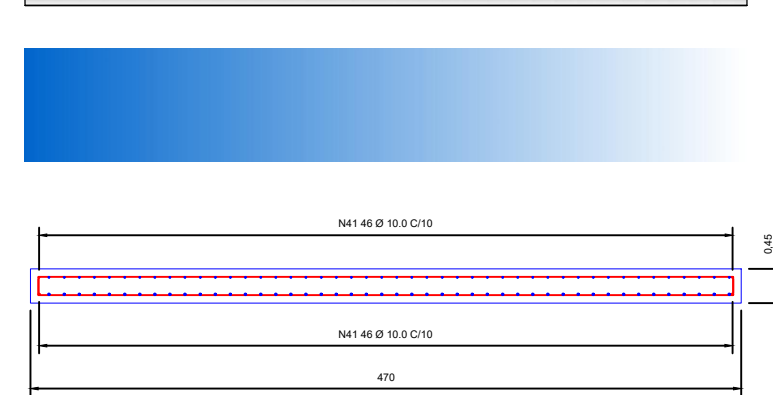
ARMAÇÃO DAS VIGAS - V1-V2-V5-V6



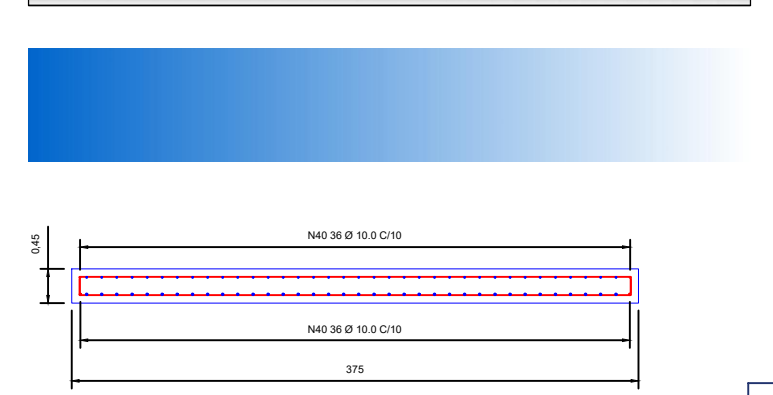
ARMAÇÃO DA LAJE - 2X



CORTE A.A



CORTE B.B



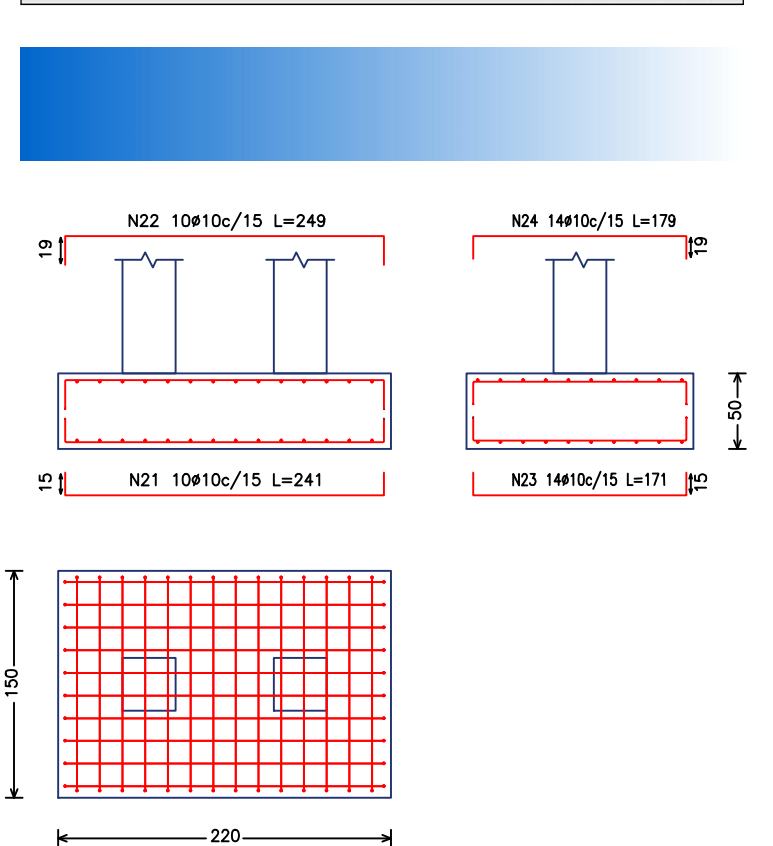
TABELAS DE QUANTIDADES DE AÇO

N	Ø	QUANT.	COMPRIMENTO(CM)	UNID.	TOTAL
3	6.3	228	110		25080
4					25080
5					25080
6					25080
7	12.5	12	430		5160
8	12.5	12	515		6180
9					11220
10					11220
11					11220
12					11220
13	16.0	12	420		5040
14	16.0	12	515		6180
15					11220
16					11220
17					11220
18					11220
19					11220
20					11220

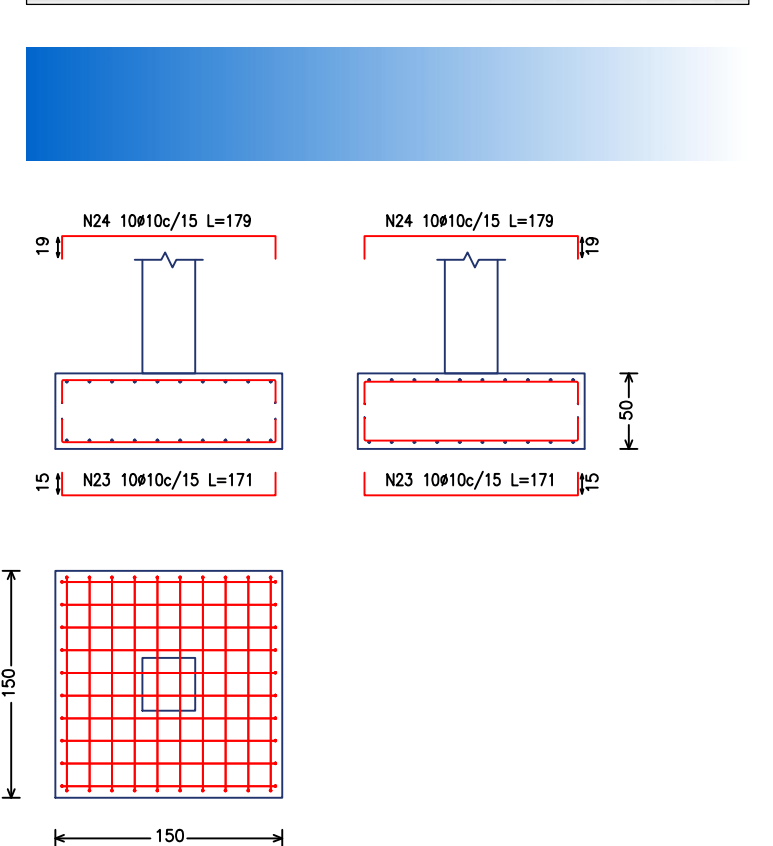
N	Ø	QUANT.	COMPRIMENTO(CM)	UNID.	TOTAL
21	10.0	40	249		9960
22	10.0	40	241		9640
23	10.0	813	171		13803
24	10.0	813	179		14552
25	10.0	10	249		2490
26	10.0	10	277		2770
27					30960
28					30960
29					30960
30					30960
31					30960
32					30960
33					30960
34					30960
35					30960
36					30960
37					30960
38					30960
39					30960
40	10.0	72	478		34416
41	10.0	82	383		31386
42					68652
43					68652
44					68652
45					68652
46					68652
47					68652
48					68652
49					68652
50					68652

N	Ø	QUANT.	COMPRIMENTO(CM)	UNID.	TOTAL
40	10.0	72	478		34416
41	10.0	82	383		31386
42					68652
43					68652
44					68652
45					68652
46					68652
47					68652
48					68652
49					68652
50					68652

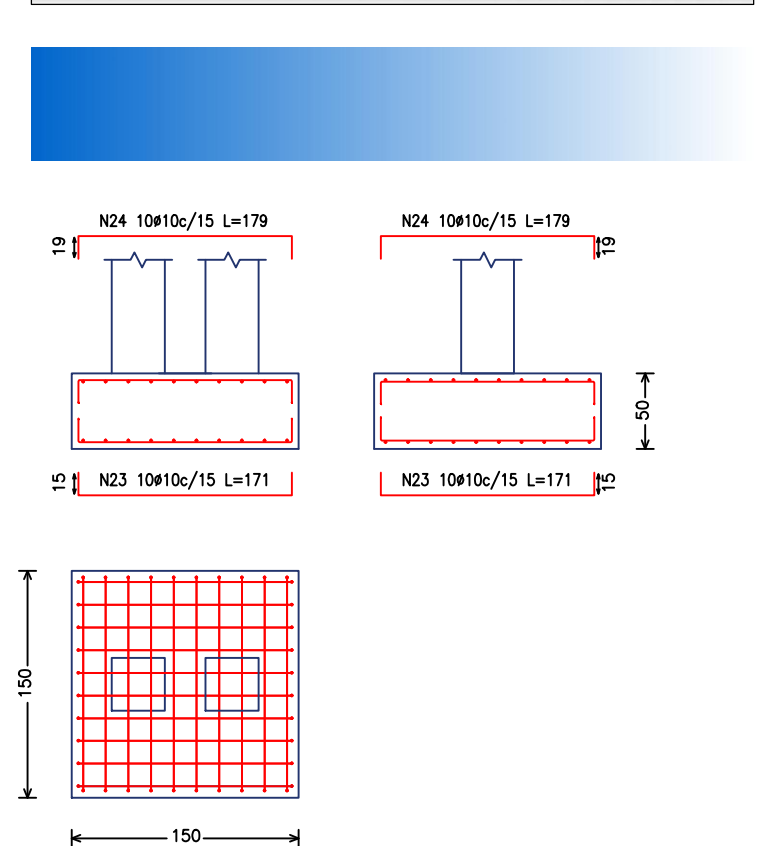
ARMAÇÃO DAS SAPATAS - 4X



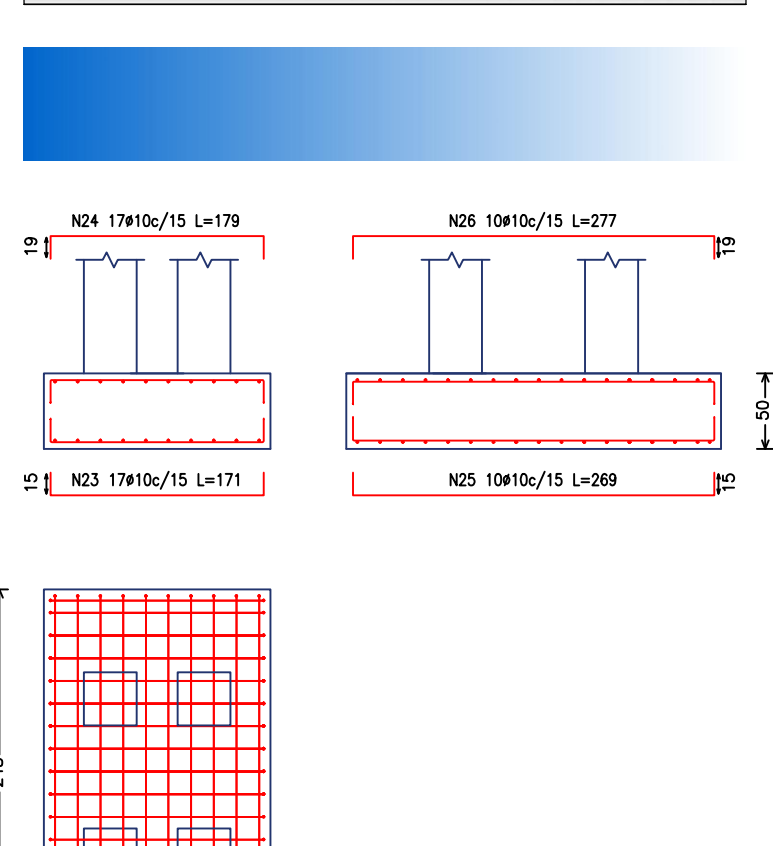
ARMAÇÃO DAS SAPATAS - 30X



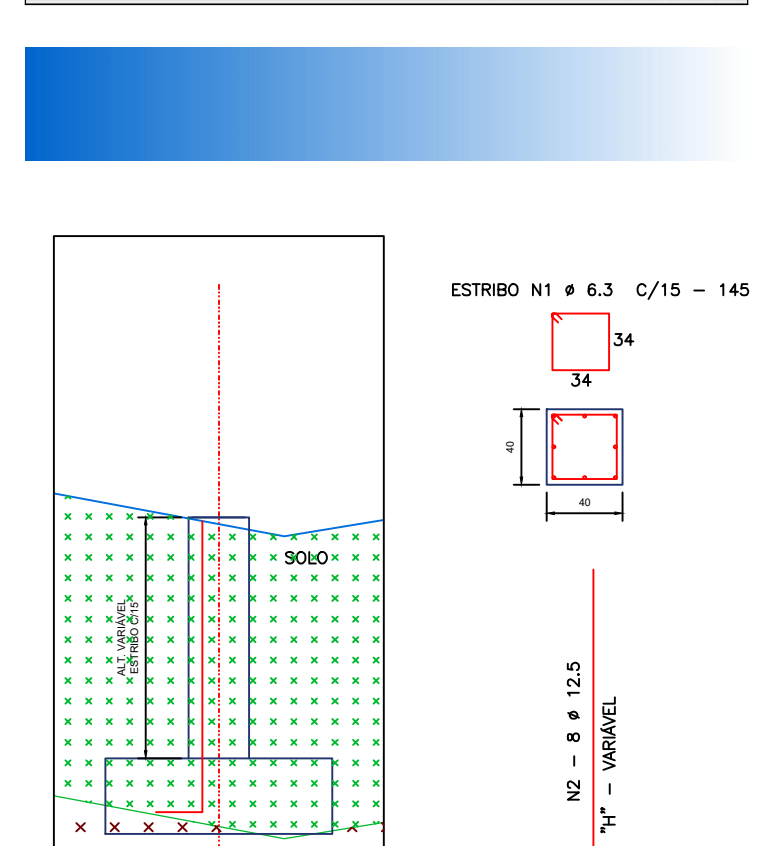
ARMAÇÃO DAS SAPATAS - 7X



ARMAÇÃO DAS SAPATAS - 1X



ARMAÇÃO DOS PILARES 40X40



RESUMO AÇO CA-50			
Ø	kg/m	m	kg
6.3	0.245	1624.00	397.88
8.0	0.385	112.00	43.10
10.0	0.617	1910.29	1180.54
12.5	0.983	1344.00	1309.92
16.0	1.578	112.00	176.74
20.0	2.468	12.50	30.85
25.0	3.853	12.50	48.16
32.0	6.313	12.50	78.91
TOTAL			1692.15

VOL. DE CONCRETO	
ESTRUTURA-Fck 30Mpa	m³
56	6.48
TOTAL	28.89

RESUMO AÇO CA-50			
Ø	kg/m	m	kg
6.3	0.245	250.80	61.44
8.0	0.385	112.00	43.10
10.0	0.617	3096.10	1910.29
12.5	0.983	1122.00	1098.04
16.0	1.578	112.00	176.74
20.0	2.468	12.50	30.85
25.0	3.853	12.50	48.16
32.0	6.313	12.50	78.91
TOTAL			3446.54

VOL. DE CONCRETO	
ESTRUTURA-Fck 30Mpa	m³
56	0.87
TOTAL	2.7

RESUMO AÇO CA-50			
Ø	kg/m	m	kg
6.3	0.245	249.00	61.44
8.0	0.385	112.00	43.10
10.0	0.617	3096.10	1910.29
12.5	0.983	1122.00	1098.04
16.0	1.578	112.00	176.74
20.0	2.468	12.50	30.85
25.0	3.853	12.50	48.16
32.0	6.313	12.50	78.91
TOTAL			3446.54

VOL. DE CONCRETO	
ESTRUTURA-Fck 30Mpa	m³
56	0.87
TOTAL	2.7

RESUMO AÇO CA-50			
Ø	kg/m	m	kg
6.3	0.245	249.00	61.44
8.0	0.385	112.00	43.10
10.0	0.617	3096.10	1910.29
12.5	0.983	1122.00	1098.04
16.0	1.578	112.00	176.74
20.0	2.468	12.50	30.85
25.0	3.853	12.50	48.16
32.0	6.313	12.50	78.91
TOTAL			3446.54

VOL. DE CONCRETO	
ESTRUTURA-Fck 30Mpa	m³
56	0.87
TOTAL	2.7



Execução de infraestrutura turística (plano inclinado) no Parque municipal Salto do Sucuriú no município de Costa Rica/MS, objeto do convênio SICONV 955044/2023 operação 1092455-10, com repasse do Ministério do Turismo e contrapartida financeira do município.

Emanuel Santos Souza
CREA Nº 506949210

Município de Costa Rica-MS
CNPJ: 15.091.000/0001-00
Cidade: Novo Hamburgo
Estado: RS
CEP: 91111-100

PREFEITURA MUNICIPAL DE COSTA RICA
Projeto nº
Aprovado em ____/____/____
Proprietário
Data: 11/2025
Escala: SEM ESCALA
Folha: 03/03